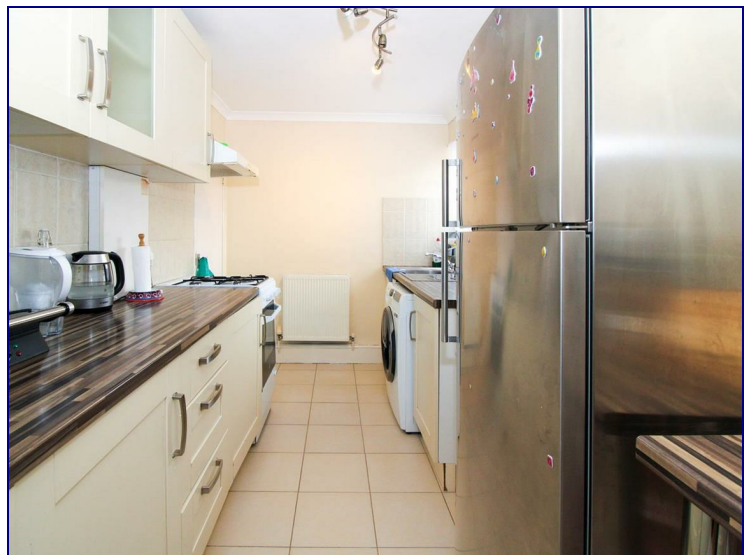


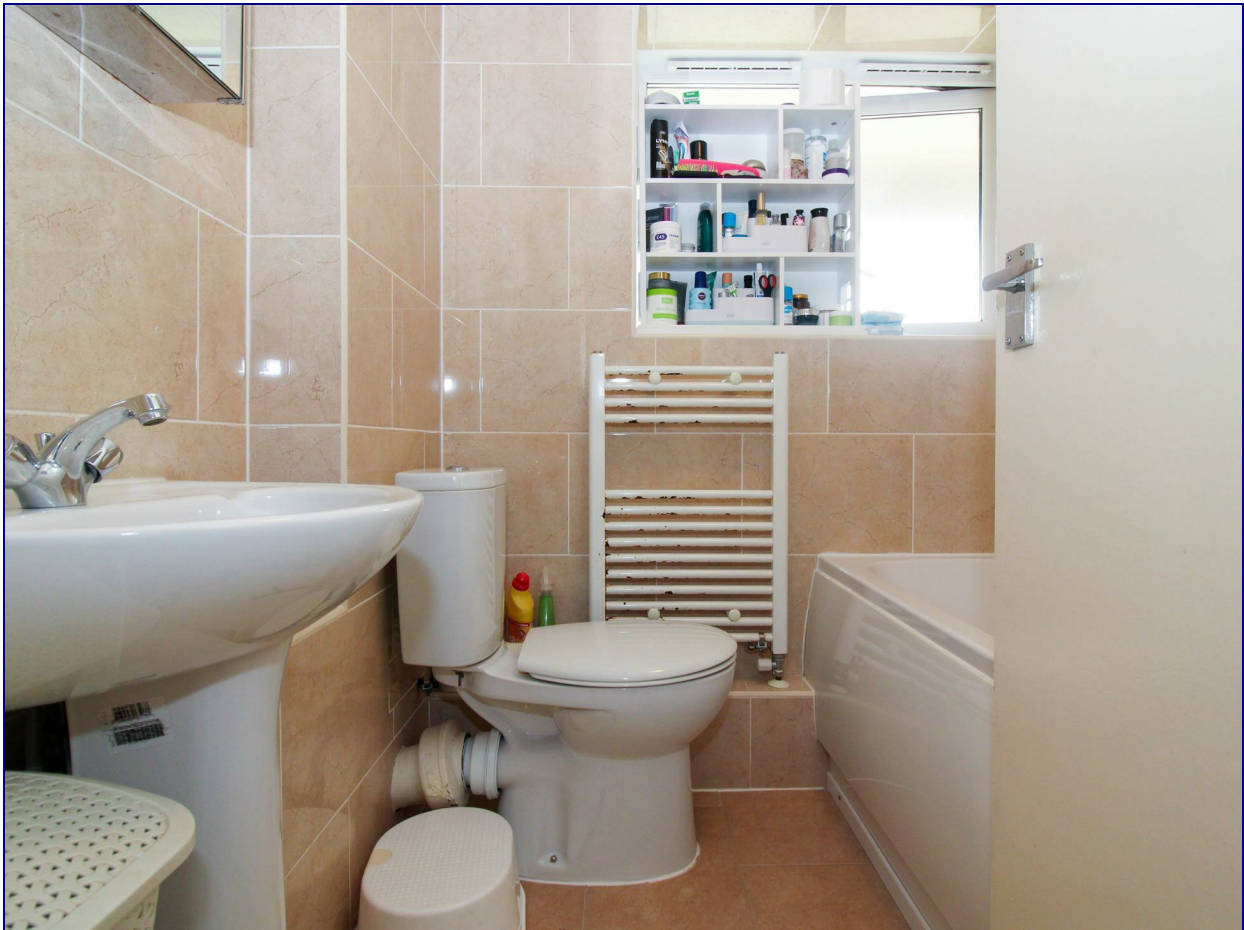
Newton Road, London, N15 4PT



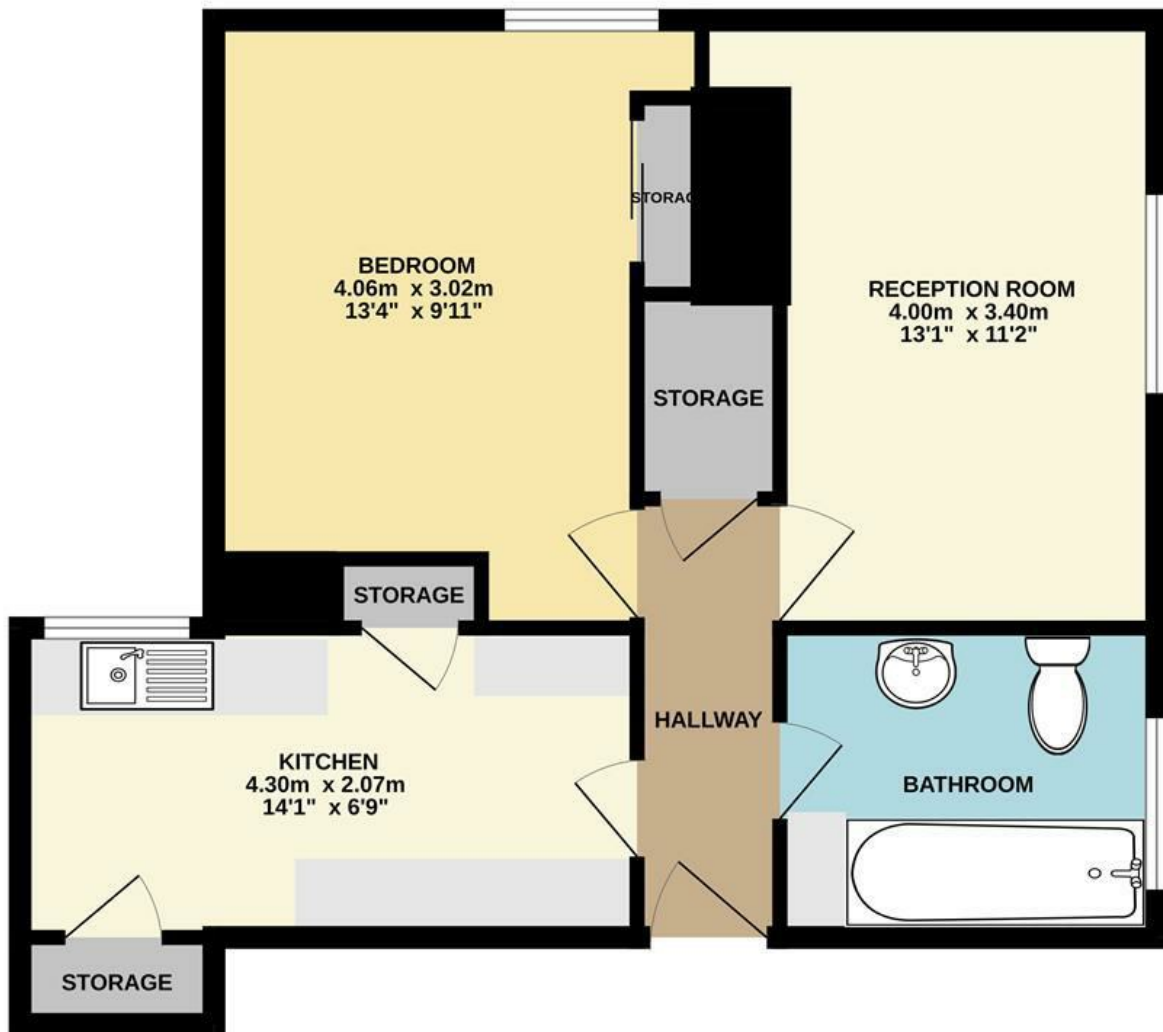
£295,000

Kings Group are pleased to present this one bedroom top floor flat located minutes away from Seven Sisters Station and Tottenham Hale Station. The property benefits from a double bedroom, a spacious light and airy living room, fitted kitchen and a three piece family bathroom and ample storage space throughout. This will be a great opportunity for a first time buyer or investor.

Situated minutes away from Seven Sisters Station and Tottenham Hale Train and Bus Station, the excellent transport links provides easy access into Central London and the surrounding areas. Tottenham Hale connects local residents to Stratford and Liverpool, with the fast train taking only 15 minutes (Overground), Stansted Airport (Stansted Express) and Central London (Victoria Line). Tottenham Retail Park is moments away with plenty of shops, restaurants and convenience stores. Regeneration is currently taking place in the area with the station and stadium under refurbishment and the proposed Crossrail 2 project passing through the station.



TOP FLOOR
64.0 sq.m. (689 sq.ft.) approx.



TOTAL FLOOR AREA : 64.0 sq.m. (689 sq.ft.) approx.

Whilst every attempt has been made to ensure the accuracy of the floorplan contained here, measurements of doors, windows, rooms and any other items are approximate and no responsibility is taken for any error, omission or mis-statement. This plan is for illustrative purposes only and should be used as such by any prospective purchaser. The services, systems and appliances shown have not been tested and no guarantee as to their operability or efficiency can be given.
Made with Metropix 5/2024

Energy Efficiency Rating		Current	Potential
Very energy efficient - lower running costs			
(92 plus) A			
(81-91) B			
(69-80) C			
(55-68) D			
(39-54) E			
(21-38) F			
(1-20) G			
Not energy efficient - higher running costs			
England & Wales	EU Directive 2002/91/EC		

Environmental Impact (CO ₂) Rating		Current	Potential
Very environmentally friendly - lower CO ₂ emissions			
(92 plus) A			
(81-91) B			
(69-80) C			
(55-68) D			
(39-54) E			
(21-38) F			
(1-20) G			
Not environmentally friendly - higher CO ₂ emissions			
England & Wales	EU Directive 2002/91/EC		

